

Newsletter March 2010

HONDA UNLEASHES NEXT GENERATION V6 OUTBOARDS

Honda's V6 175, 200's and 225 horsepower outboards have undergone some changes and refinements designed to push the boundaries of this outboard class.

These big displacement V6 engines are now NMEA compatible which allows them to communicate with suitable on board electronic systems, deliver more torque and are more fuel efficient.



The incorporation of Honda's "Boosted Low Speed Torque" (BLAST) technology further increases the stunning acceleration of these engines. Fuel savings of 5 percent over the previous models has been achieved by adopting a combination of an O2 feedback system and a simple lean burn feature.

A new gear case with redesigned hydrodynamics, new design anti cavitation plate, more anti corrosion anodes and improved water intake screens put this class leader further ahead of the competition.

CONVENTIONAL PUNTS AGAIN AVAILABLE.

For a few years the tried and trusted square nose punt was hard to find as many manufacturers deleted them from their ranges in lieu of V nose punts.

Now both Sea Jay and Blue Fin have reintroduced them into their model ranges to satisfy the demand created by calm water fishers looking for a stable no frills platform to fish out of.



Blue fin's Catfish range consist of a 3 metre and a 3,6 metre model while Sea Jay produce a 3 metre, 3.4 metre and 3.7 metre model. These punts are all built of 1.6 MM. material and are durable well made products.

KEEP THE FUEL CLEAN.

Clean fuel is essential to the reliability of your outboard and is one of the most common problems that we deal with in our service department.



A good quality fuel filter/water separator is an essential these days and one with a transparent bowl with a drain on it will help with seeing and draining away contaminants and water. For a four stroke engine select a fine filter of about 10 microns and remember to install it above decks if possible to ensure no fuel spillage into the bilge.

FIGHT OVER CORAL SEA CONTINUES

As the proclamation of the Coral Sea Conservation zone and its ramifications for future environmental decisions become more fully understood fishers and responsible environmentalists are realizing that they must have their voice adequately heard.

On the 9th of December over 500 concerned citizens gathered at Croswell Hall in Cairns to hear the latest developments in this long saga. The meeting expressed outrage at the fact that the Minister for Environment, Water, Heritage and Arts, Minister Garrett had only consulted with two environmental groups prior to enacting the proclamation.

The lack of scientific evidence to underpin the decision is as much a concern as the decision itself. The Government's own study to determine the level of protection required is not even due for release until the end of 2010. Why then was the decision made when the very science that is needed to determine what should be done is not completed?

With the re zoning of the Great Barrier Reef due in 2011 and the environmental groups already lobbying the Government for increased closures in this area we need to ensure that the voice of recreational fishers is heard loud and clear.

The Coral Sea Conservation Zone shares a common boundary with the Great Barrier Reef and at a meeting in Cairns we were informed by bureaucrats that there will be some management integration between the two areas.

Please make sure that your voice is heard, let your elected representatives know that decisions made on issues such as these without scientific proof and justification are not acceptable.

NAUTICAL SAYINGS: Pull Your Finger Out

Cannons were primed with a small amount of gun powder, this was poured into a small hole. The sailor was ordered to keep his finger over the hole to stop the gun powder from falling out, just before the powder was ignited the order was given to "PULL YOUR FINGER OUT".

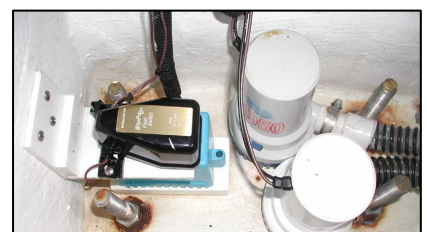
Cut and Run

In an emergency or desperate situation, rather than haul up an anchor, the sailors would cut the anchor cable then run with the wind.

WHAT'S IN THE BILGE?

Besides sludge, mud, and old fishing tackle there are so many things that find themselves into the bilge that just simply should not be there that it is worth cleaning out fairly regularly.

While old fishing line or rags can stop a bilge pump some things like sinkers will lead to electrolysis and if left in the bilge can



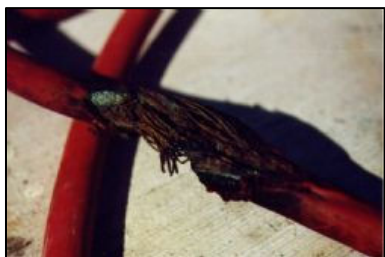
eventually cause perforation of the hull through electrolysis.

While in the bilge spend some time and look at any fuel lines that are run through there to ensure that they are in good condition, making sure they are not being chafed around ribs or bulkheads. The same applies to any electrical wiring that is run under the floor.

While sometimes areas of the floor may have to be raised to inspect these areas it is a lot easier to do it on shore than while out on the water.

DODGY ELECTRICAL CONNECTIONS

Water and electrical connections are never a happy marriage and even less so when that water is salt.



There are steps that you can take to eliminate many of these problems and one of these is to ensure that any connections that you make are secure and as waterproof as they can be.

Dura Seal connectors are designed to be crimped and then warmed up so that the heat causes the connector to shrink over the wire. An application of a butyl rubber tape such as RUBBERWELD will go a long way to waterproofing the joint.

Where possible support the wiring with a P clip to try to keep it away from being splashed.

NEW PRODUCTS TO THE MARKET

HONDA RELEASE NEW IMPROVED 4-STROKE OIL

Honda has released new and improved four stroke lubricating oil for use in their 4-stroke engine range. The oil has been rigorously tested by the Honda research and development team and is fully accredited world wide.



The advantages of Honda's new FC-W10W-30 engine oil include: Increased rust and oxidation inhibitors to fight corrosion in the marine environment.

Shear stable polymers to resist viscosity breakdown under high RPM and load conditions.

Improved anti-foaming characteristics to better protect the engine at high RPM. Excellent performance in high temperature high shear viscosity test to ensure viscosity retention despite the fuel dilution associated with marine engines.

It also has additional anti-wear additives for improved bearing protection.

NEW PLATE MODEL MANGROVE JACK!

Blue Fin's ever popular 4.2m Mangrove Jack is now available in a plate version.

This model has always been one of Blue Fin's top sellers because of its sturdy construction, soft ride and stability. It offers further improvements and is now an even better looking boat.

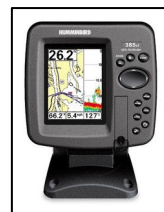


Standard equipment includes carpeted front and rear casting platforms, two upholstered seats with four positions, transom step, painted hull and navigation light brackets. The boat can be optioned with a side console (Sidewinder Model), spray chines, electric motor mount a 30 litre under floor fuel tank and divided live well.

NEW MODEL HUMMINBIRDS

Humminbird has released two new model combination units to their already outstanding range of sounders and GPSs. The new 300 and 800 series combo units are both full of handy features and will maximize your angling experience.

The 385ci combo unit is not so much brand new to the market place, but has had significant upgrades to its predecessor. It now comes with a card reader in the front of the unit meaning you can insert a Navionics SD card for detailed mapping of channels, reefs, islands, fishing zones and much more. This combined with a full colour sounder makes a powerful yet affordable unit for small boat owners.



Brand new to the Humminbird range are the 858c and the 898c SI combo units. Both units feature a brilliant colour, ultra-high resolution 7" display, dual beam sonar, GPS chartplotting and advanced fishing system capabilities. In addition, both units have dual card slot readers for mapping and for saving waypoints. The benefit of the 898c SI is that it has Side Imaging technology giving you a superior view and detail of the ocean floor.



For more information please drop in to our shop or go to www.humminbird.com.

PLASTIC PROTECTION HAS NEVER BEEN CLEARER

VuPlex® was designed for use within the demanding Aviation industry and delivers a fast, safe, and effective solution to plastic maintenance. The ingredients in VuPlex® have been specifically selected and tested to deliver fast quality results with the minimum of effort and fuss.

Some cleaners use abrasives to remove dirt and scratches. This not only introduces more scratches to the surface but over time weakens the plastic through constant plastic removal. VuPlex® works in reverse to this process by penetrating the dirt and grime in the surface and adding a fine layer of filling material that leaves the surface protected and adds a lustrous finish to clear and coloured plastics and makes plastic paints gleam like new.

VuPlex® is a preventative as much as a cure. If VuPlex® is applied when plastic is new, it protects the surface from premature aging. If the surface is already damaged with fine scratches and in-ground grime, VuPlex® will restore the surface and clarity, leaving a finish that is polished and protected.



Available now in 200g and 375g aerosol cans.

Mitchell's Marine

303-305 Draper Street, Cairns QLD 4870

Ph: 07 4051 3355 Fax: 07 4031 1008