

Newsletter Summer 2009/2010

HONDA WINS CUSTOMER SATISFACTION SURVEY

Honda's EFI outboards have ranked 'Highest in Customer satisfaction with Four-Stroke Outboard Engines' in the US J.D. Power and associates 2009 Marine Engine Competitive Information Study.



In its eighth year, the study measures overall customer satisfaction with four marine engine types: EFI inboard; four-stroke EFI outboard; two-stroke DI outboard; and EFI stern drive. Honda received this award in 2005, 2006, 2007 and for a fourth time this year.

Overall customer satisfaction scores are based on performance across seven factors: starting ease; quietness at cruise; reliability; fuel economy; shifting smoothness; lack of exhaust fumes; and ability to

accelerate rapidly. The study also examines engine quality, where scores are measured as problems per hundred engines.

COMMUNITY VOICES ANGER OVER WILD RIVERS/CORAL SEA PARK.

The Cairns Community met once again to demonstrate its concern and dissatisfaction over the recent declaration of The Coral Sea Conservation Zone by the Federal Government in May 2009.

The discussion centered around the fact that this proclamation was made without any consultation. The Government's bioregional profile study, which determines what level of protection is required, is not due for completion until the middle of 2010 and as such no scientific evidence exists to determine what



Picture: Concerned community members showing their support at the August meeting held in October 2009.

protection if any is necessary. The bioregional profile study document confirms that the area is lightly used and is in pristine condition and without the completion of the study, no one not even the people who proclaimed the park know what it is being protected from.

Concern was also expressed at the handling of the Wild Rivers issue by the state Government. While it was acknowledged that fishing activities were not currently impacted it was pointed out

that this could change with a stroke of the pen. Governments must make these decisions on scientific evidence for the good of the community and the environment. To do otherwise endangers the well being of both.

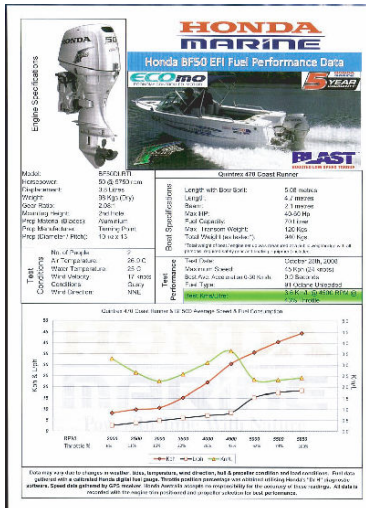
NEW LOW CONSUMPTION LED FLOOD LIGHT

This new LED floodlight claims to be as bright as anything of its size currently available on the market. We lit one up in the shop recently and it definitely puts out a lot of light and being LED its power consumption is much less than the conventional deck lights.



The aluminium housing is robust and the mounting bracket is stainless steel. One of these may be well worth a look, it will make your night fishing a lot safer and easier and with less battery drain than conventional deck lights, it will be a lot easier on your battery.

HONDA RELEASE FUEL CONSUMPTION DATA ON OUTBOARDS.



Honda has recently provided its dealer network with a brochure that provides data on fuel consumption tests done on many of its outboards. Fuel consumption is an important part of the decision making process when buying an outboard and the publication of this data further reinforces Honda's confidence in its range of outboards.

Much of the information comes from magazine

tests and is provided during their independent test procedures. With the provision of fuel consumption figures and the knowledge that the entire range of Honda outboards are covered by a five year recreational use warranty consumers can now research their outboard purchase with the same confidence that Honda demonstrates in its products.

NEW WEBSITE UP AND RUNNING!

Our new web site is finally up and running. Besides all the things that you would expect to find on a marine businesses web site there are a few useful links that will help to keep you within the regulations and up to date with all the latest. Have a look when you have a spare moment at mitchells@iig.com.au

BRAGGING RIGHTS

There are a few nice Wahoo out wide at the moment...



This one went about 22kgs and was taken by Marcus Burt on Scott Taunton's 21ft Haines Hunter "Valhalla" recently out at Linden Bank.

If you have something worth bragging about, send us your fishy photos to email address: mitchells@iig.com.au

Pip Walker with a 113cm Barramundi, Lake Tinaroo (Right)



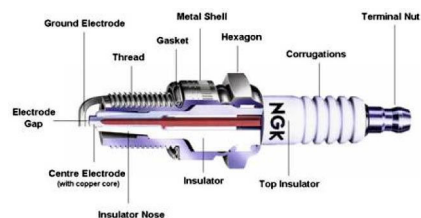
Ben Walker with a Juvenile Black Marlin (Approx 35kgs) taken at Grafton Passage (Left)

Chris Headley nailed this 26kg Spaniard around Nicholas Reef on board Valhalla (right)



IT ALL STARTS WITH A SPARK!

The correct spark plug and its condition are one of the components that will determine how well, or if your outboard motor will work properly. Spark plug manufacturers make hundreds of different plugs largely dependent on the design of the engine and the job that it is doing. We quite often get asked at the counter what is meant by a spark plug's heat range.



Plugs are often referred to as either hot or cold. A hot spark plug heats up more quickly and are usually used in low power engines which do not

generate a lot of heat-this helps the engine to get to its operating temperature more easily. Cold plugs on the other hand are used in high performance engines that do generate a lot of heat and as such some of that heat needs to be dissipated. Hot spark plugs have long, thin insulators while cold plugs have a short, thick insulator nose. Some spark plugs have internal resistors built into them. These resistors suppress ignition noise which can interfere with sound systems, mobile phones and in some cases the engine management system. Make sure that you fit the right spark plug as recommended by your outboard manufacturer to ensure optimal performance and reliability.

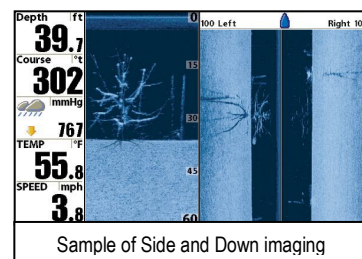
JAPANESE TECHNOLOGY TAKES CONTROL

Over the last few years there has been a significant improvement in control cable technology that has provided not only longer lasting cables but ones that are much smoother and easier to operate. All Honda remote control outboards are now supplied with low friction "Hi Lex" control cables as standard equipment. These distinctive cables are made in Japan and are easily recognizable by their blue outer sheath. Good quality cables are not only more pleasant to use but also make gear shifting and throttle setting more precise reducing wear and tear on gearboxes and throttle linkages. Next time you are near the shop pop in and we will show you these cables and demonstrate how smooth and effort free their operation is. While these cables are standard on Honda engines they can be bought as a spare part and will fit any outboard that runs a standard Morse type cable.

HUMMINBIRD UPDATE

Humminbird have now added 'Down Sonar Imaging' in addition to their groundbreaking side imaging technology to several models in their product range.

Down imaging provides a picture like image of what is beneath the boat and in the water column below. Couple this with side imaging and the angler can see a detailed full 180 degrees of the bottom.



Best of all, if you already have an SI Humminbird unit, it is obtainable by a simple upgrade which is free and is scheduled for release in January 2010. Check the Humminbird website for the update closer to release <http://www.humminbird.com/support/>

REEF FIN FISH CLOSURES

The number of spawning closures has been reduced from 3 down to 2 and their length shortened from 9 days to 5.

2009

October 15th – October 19th

November 14th – November 18th

2010

October 5th – October 9th

November 3rd – November 7th

2011

October 24th – October 28th

November 22nd – November 26th

2012

October 12th – October 16th

November 11th – November 15th

2013

October 2nd – October 6th

October 31st – November 4th

During this period you can still fish for pelagic species such as Mackerel, Tuna, Wahoo, etc...but excludes reef fish such as Coral Trout, Red Emperor and Nannygai. For more information and a complete list reef fin fish please go to http://www.dpi.qld.gov.au/28_3055.htm